



The Scrawls

The Voice of Home Educators In Lancaster County

Vol. 18 No.6 www.chalc.org

February 2013

FREE

CHALC Homeschool Event

Lancaster General Health's "Think First"

April 1, 2013 at 9:00 AM



"Think First" is an injury prevention program for children in grades 1-12. This program explores the choices that children and teens make that can lead to life-changing brain and spinal cord injuries.

Program for 1st to 5th graders - will include activities that demonstrate the benefits of wearing bike helmets and seat belts, along with a cartoon video about safety, puzzles, coloring and activity sheets.

Program for 6th to 12th graders - will include the video "Think About Your Choices" and a presentation about brain and spinal cord injuries. The physics of a motor vehicle crash and how it affects the body, first responder concerns, why young people are at such high risk of traumatic injuries, and the effect of drugs and alcohol on judgment is also stressed. This national injury prevention program was developed in the 1990s by neurosurgeons.

Tour the LGH Trauma Center and Trauma-Neurosurgical Unit and see a demonstration by the STAT Medevac helicopter and staff.

Location: Stager Conference Center at Lancaster General Hospital

Parking: LGH visitor parking garage

Program Duration: Approximately 2 1/2 hours - *Parents must accompany students.*

To Register: Email scrawls@chalc.org by March 27 with names (including parent) and grades of all attending. *Space is limited; register early.*

**CHALC
GIVE-AWAY**

**February Giveaway Winner
Yvette Freeman**

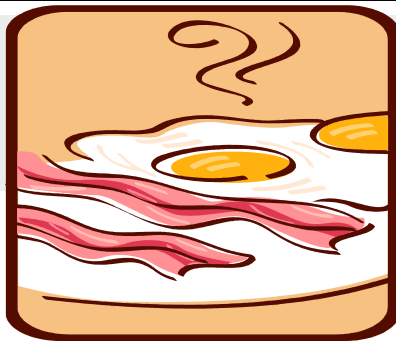
of LACHE

*won a \$25 gift card to
Sharp Shopper
Grocery Outlet*

CHALC will be giving away gift certificates from local businesses.

You must be a member of a CHALC support group and be listed on the current CHALC data base to win.

**Join a CHALC support group
TODAY!**



CHALC Support Group Leaders' Breakfast

March 2, 2013 - 8:00 AM
Bird-in-Hand Restaurant

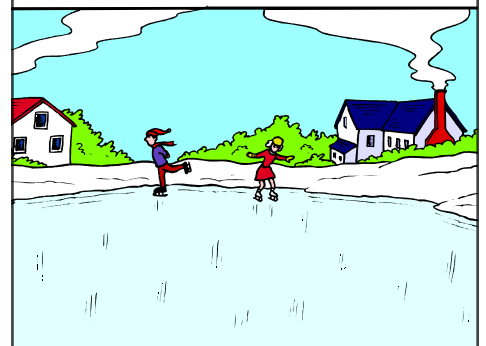
Special Guest Speakers - Dr. and Mrs. Bruce Eagleson
Topic - What's Next for Homeschooling?

Dr. Eagleson is a practicing emergency physician. He and his wife have homeschooled their four children. Dr. Eagleson is the founding chairman of the national homeschool advocacy group, National Alliance of Christian Home Education Leadership. The Eaglesons have served on the board of directors of the Christian Homeschool Association of Pennsylvania (CHAP). In addition, Dr. Eagleson is the author of the CHAP book, *Keys to Homeschooling in the Keystone State*.

RSVP to Sharon Martin at Isjeim@ptd.net by February 23

Table of Contents

Scrawls Information	2
2013 CHALC Graduation	4
Cornerstone Homeschoolers	6
TEACH	8
Manheim Area Christian Homeschoolers	12
CV Homeschoolers	14
Lititz Home Educators	16
CHASE	18
The Learning Station	20
CHEX	22
CHALC Rebate Form	24
General Announcements & For Sale Items	25
CHALC Board Minutes	25
Evaluators	26
Support Group Information	27



CHALC requests that all submissions be sent via e-mail to scrawls@chalc.org or in a complete and ready to place condition to **CHALC, PO Box 480, Leola, PA 17540**. Due to the possibility of error, **submissions will NOT be taken over the phone**. Items must be received no later than the **10th of the month**. Items will not be carried to the next month, you need to resubmit the item. If you move, please send your new address ASAP to scrawls@chalc.org. The newsletter is not forwarded. Any newsletter inquires can be directed to Belinda LeFever at scrawls@chalc.org. We reserve the right to edit and/or refuse any submissions.

Timely delivery of *The Scrawls* is a top priority. Please meet the set deadlines.

Disclaimer: Articles & advertisements that appear in *The Scrawls* do not imply endorsement by CHALC. Any use of information, products, opportunities, or services advertised/published in this newsletter should be done only after you, the individual reader, have thoroughly reviewed and independently investigated it for yourself.

Ad Rates

Business Card (3.75"W x 2"H) \$12.50*
 1/4 Page (3.75"W x 5"H) \$25.00*
 1/2 Page (7.5"W x 5"H) \$50.00*
 Full Page (7.5"W x 10"H) \$100.00*
(Additional charges may apply)

Ads can be submitted via email (.tif or .pdf at a high resolution) and must be received by the 8th of the previous month. Pencil ads and drawings will not be accepted. *A \$5 extra charge will apply if any changes or adjustments are needed in the text or graphics for a new or existing ad. If you wish for us to design the ad it must be received by the 6th of the month and you will be charged an extra one time design fee of \$5 per ad regardless of size. Any advertisement inquiries should be directed to scrawls@chalc.org or if you do not have email, mail ads to CHALC Advertising, PO Box 480, Leola, PA 17540. Questions? Contact Belinda LeFever at scrawls@chalc.org

Meetings of the Board

All meetings are at 6:30 PM

Meeting site changes without notice, please call for confirmation.

At the Spanglers' residence:

February 7
March 7



THE CHALC BOARD

Ladd / Sharon Martin
717-445-4871
PRESIDENT

Mark / Jenny Espenshade
892-2764
VICE PRESIDENT

Chris / Jodi Fieger
717-335-2944
TREASURER

Chris Freeman
627-2463
ASST. TREASURER

Steve / Debbie Spangler
717-656-8565
CORRESPONDING SECRETARY / WEB

Paul / Sophia Schwarz
717-299-1603
RECORDING SECRETARY

Visit the CHALC web site
www.chalc.org
Email Board Members
mail@chalc.org

How do I obtain the CHALC newsletter - The Scrawls?

Support Group members will receive *The Scrawls* with their paid CHALC support group membership fee. **IF YOU ARE NOT PART OF A CHALC SUPPORT GROUP, YOU MAY BE A SUBSCRIBER TO THE NEWSLETTER BUT WILL NOT BE CONSIDERED A MEMBER.** Please send a \$35.00 check along with the subscription form below to : CHALC , PO Box 480, Leola, PA 17540. If your check is received by the 15th of the month, you will be included in the database to receive the next month's newsletter. The newsletter is sent 10 times during the year (Aug to July) with Dec/Jan and June/July being combined issues. All subscriptions end with the June/July issue and must be renewed at that time, regardless of when you joined.

SUBSCRIPTION FORM

If you choose not to be a member of a support group you may still get a subscription to the *Scrawls*. This does not entitle you to any member benefits. The *Scrawls* sends out 10 issues a year. Subscription runs from August 1st to July 31st. Send in the following information and a \$35 check made payable to CHALC. All subscriptions end with the June/July issue and must be renewed at that time, regardless of when you joined.

NAME: _____ SPOUSE: _____

ADDRESS: _____

PHONE NUMBER: _____ EMAIL: _____

Mail to: CHALC, PO Box 480, Leola, PA 17540



STOP the... Frustration

Free Parent/Teacher Seminars

Monday, February 4, 2013

7 p.m - 9 p.m.

Eden Resort

222 Eden Road Lancaster, PA 17601

Renowned Authorities

Dr. Arthur Seiderman

Internationally Acclaimed Author of "20/20 is Not Enough"

AND

Dr. Robert Fisher

Psychologist & Educator

**Call Today
to
Reserve Your Spot**

Do Any Of These Describe Your Child?

- Difficulty Reading
- Trouble Concentrating
- A.D.D. (Attention Deficit Disorder)
- Reverses Letters Or Words
- Lacks Motivation & Self-Esteem

We Can Diagnose & Help.

656-0534

Vision Development Center

www.helpaddvisiontherapy.com

656-0534

Paid Ads

Vision Development Center	pg 3
Lanc. Center for Classical Studies	pg 3
Lanc. General College	pg 7
PA College of Art and Design	pg 7
Ephrata Public Library	pg 8
Lanc. County Christian School	pg 10
HACC	pg 11
Turkey Hill Experience	pg 13
Black Rock Retreat	pg 15
Debra Bell Testing	pg 15
Noteworthy Music Services	pg 17
Crystal Reflections	pg 17
National Watch & Clock Museum	pg 17
Menges, McLaughlin. PC	pg 17
Rep. Gordon Denlinger	pg 17
Lancaster Symphony Orchestra	pg 19
Galen Hershey - Science Classes	pg 19
Write From the Heart	pg 19
Handi*Camp	pg 22
Irish Dance Lessons	pg 22
SpeechCare	pg 23
PEEC	pg 23
Zelteneich Reformed Church	pg 23
Eldonna Filardi - Music lessons	pg 25



*The Lancaster Center
for*

Classical Studies

717.397.3223

LCCS.org@comcast.net

Latin and Greek Studies

*Homeschool Latin and Greek Courses
at all levels for students 8 – 18*

Homeschool Diploma-Program

Recognized by the Pennsylvania Department of Education

Free Sample Latin Class

Thursday, 7 March: 4 – 5 pm

Friday, 8 March: 2 – 3 pm

Please call to register for a sample class.

Registration is open for 2013-2014 courses.

The Lancaster Center for Classical Studies

910 Marietta Avenue

Lancaster, PA 17603

www.latinandgreek.org

ID Statement - The Scrawls CHALC - Coalition of Homeschoolers
Across Lancaster County, PO Box 480, Leola, PA 17540
February 2013 Issue Vol. 18 No. 6
Published 10 Times a Year - Aug., Sept., Oct., Nov., Dec/Jan.,
Feb., March, April, May, June/July
'12/'13 Subscription Price - \$35.00



18th Annual
CHALC Graduation
May 31, 2013
Calvary Church, Lancaster

Keynote Speaker - Dr. Stephen Nichols

Stephen J. Nichols is research professor of Christianity and culture at Lancaster Bible College. He has written 15 books on such topics as the Reformation, Jonathan Edwards and even blues music. His most recent book is Bonhoeffer on the Christian Life: From the Cross, for the World. He is an adjunct faculty member for Reformed Theological Seminary and a visiting lecturer at London Theological Seminary. Steve and his wife, Heidi, live in Lancaster with their three children: Ben, Ian and Grace.



Come to the Graduation Planning Meeting on Thursday, February 21, 2013

All graduation planning meetings are held from 7 - 9 PM.

Meeting location: Calvary Church, 1051 Landis Valley Road, Lancaster

Enter at East Entrance - Meet in the Fellowship Hall

What to bring:

Girl Grads - Bring a 1/2 Gallon drink

Boy Grads - Bring a snack item

Please Note: Do NOT bring or invite outside guests to the meetings. Thank you.

Future Planning Meeting Dates - Mark Your Calendar:

Monday, March 18, 2013

Thursday, April 18, 2013

Monday, May 20, 2013

Friday, May 31, 2013 - Mandatory Morning Practice

Graduate & 1 Parent Must Attend

Graduation Announcements

Banquet Committee -

The Class Banquet will be held at 6 P.M. on Thursday, March 14th at the Eden Resort. Tickets will be sold at the next graduation meeting. Family and friends are welcome to attend! Please come a few minutes early to purchase your tickets (we start selling at 6:30 P.M.). Please pay with a check or exact change.

Adults tickets (over 12 year old) will be \$25 per person (choice between Chicken Florentine or Salmon)
Children 12 and under will be \$13 for (chicken fingers, French fries and dessert).

At the time of your ticket purchase, please plan to reserve seats at a table. If you plan to sit with another family, please purchase tickets on the same night. Tables seat up to 10 people.

Formal Committee -

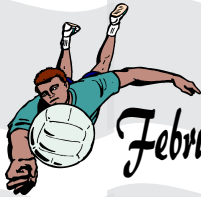
The CHALC formal is on Friday, April 26, 2013.

Ordering Committee -

- Class colors are purple and gray and the class verse is Joshua 1:9
- Your Personal Information sheet from your graduation folder was due at the January Planning Meeting. If you missed this deadline please email the information immediately to graduation@chalc.org.

Photography Committee -

- **PHOTO DEADLINE:** Photos for the video collage and graduation program were due at the January Planning Meeting. The Photo Form is on the website. Please contact scrawls@chalc.org to arrange a time to hand them in.
- **ARTWORK NEEDED:** We need colorful artwork for the cover of our graduation program. Please bring it to our February graduation meeting!



February Graduation Social / Gym Night / Friday, February 15, 2013

Time: 7:00 - 10:00 p.m.

Place: Christian Fellowship Church, 758 Spruce Road, New Holland, PA 17557 (enter at back carport)

Cost: Free

Bring: Girls bring a snack, Guys bring a drink

RSVP to Sharon Martin at lsjeim@ptd.net by February 14.

We will have volleyball, basketball, and board and card games.



March Graduation Social / Bowling / Sunday, March 24, 2013



What: Bowling

Where: Dutch Lanes, 4311 Oregon Pike, Ephrata, PA 17522

When: Sunday, March 24, 6:45 - 9:00 p.m.

Cost: \$10.15 includes two games of bowling and shoe rental
RSVP to Sharon Kershner at kershner4@comcast.net by March 20.

Cornerstone Upper Tier :

Sneak Peak – Cornerstone Upper Tier Classes – 2013/2014

Details: www.homeschool-life.com/pa/cornerstone

8:40	Spanish 4 (9:15-9:45)	Bible	Adventure stories (fall) History (spring)	Dave ramsey	PE – fall & spring	Algebra One	Biology – college bound	Intro to Physical Science	Sewing	Comp & grammar	French one
9:45	Spanish 3	British Lit	Civics and geography	Intro to engineering/ Electronics (8:40-10:50)	Health & Safety (fall) Fitness (spring)	preCalc	Biology -reg	Intro to physical science	Psychology	Comp and grammar	French Two
10:50	Spanish 2	Writing the Novel Way	Writers Workshop	Life science	Intro to Lit	Algebra two	Environmental Science	physics	logic	Basic art	American Lit
12:30	Spanish 2	Sr Writing and Speech			World Lit			geometry	European/Art history	Basic art	
1:35	Spanish 1	Sr Writing and Speech	Us history		Creative Writing			chemistry		3D art	
2:40	Spanish 1							chemistry		Cartooning	

Cornerstone Lower Tier Calendar:

Classes will be held on these Thursdays from 12:20-3:40 p.m. at Grace Baptist Church in Lancaster:

Feb. 7, 21, 28

March 7, 21

Snowdate: March 28

Cornerstone K-6th grade Spring Concert - Friday, March 22 at GBC

Preparing You for Lifelong Success!

OPEN HOUSES: February 2 and March 16

- **Dynamic and academically rigorous programs in nursing and health sciences**
- **Hands-on learning alongside experienced healthcare leaders**
- **Clinical affiliation with Lancaster General Hospital**
- **High licensure/exam pass rates**
- **Great job placement rates**



Lancaster General
College of Nursing
& Health Sciences
410 North Lime Street, Lancaster, PA

www.LancasterGeneralCollege.edu
or call (717) 544-4912 for more info



BUILD YOUR PORTFOLIO FOR ADMISSION TO ART COLLEGE



WINTER/SPRING PRE-COLLEGE COURSES 9TH GRADE TO ADULT

WEDNESDAY, FEB. 6
Portfolio Preparation Workshop

SATURDAY, FEB. 9- APRIL 13
Portrait Drawing

SATURDAY, FEB. 9- APR. 13
Digital Photography

*High School students are eligible
to participate in all adult courses*

**FOR A FREE CATALOG, CALL OR EMAIL
CONTINUING EDUCATION TODAY**

**Open
House**

Sat., Jan. 12. and
Mar. 23, 2013
11 a.m. - 2:30 p.m.

Pennsylvania College of Art & Design
YOUR PLACE TO **EXPLORE ART**
204 North Prince Street, Lancaster, PA 17603



717-396-7833 x1022 ▶ ce@pcad.edu

Mohn's Hill Leaders:

Deb Goodman: 610-678-5452 (home)
610-763-0741 (cell)
jdgoodysmom@yahoo.com
Beverly Weaver: 717-445-4631 (home)
717-682-5245 (cell)
lbweaver7@gmail.com
Barbara Baines: 610-926-5965
TEACHnewsletter@frontier.com

Bethany Grace Leader:

Pam Hasse: 717-445-4613
bphasse@frontiernet.net

Website: www.homeschool-life.com/pa/teach



Treasurer:

Tammy Martin: 717-445-9428
sevenmartins@frontiernet.net

Membership Applications:

Joyce High: 717-733-4735
tj4ahigh@gmail.com

Field Trip Coordinator:

Jillian Woodruff: 610-796-8623
jjwoodruff1@msn.com

Cell Group Coordinator:

Debbie Horst: 717-445-9431
ldhorst8@gmail.com

E-loop: teacheloop@gmail.com

HOMESCHOOL LIFE WEBSITE

As you can see this newsletter has less information than previous months. Hopefully you are reading the emails coming from the Homeschool Life website and through the e-loop to your personal emails. They have much of the key current information!

MOHN'S HILL CO-OP CALENDAR AT A GLANCE

Feb. 7, 2013.....Class make up day
Feb. 14, 2013.....Spring session begins
Mar. 21st.....NO co-op due to the TEACH Players play
Apr. 25, 2013.....Spring session ends
May 2, 2013.....Class make up day

CELL GROUP 2

February 18th.....Moms' night at the Horst's
March 12th.....Martin Guitar and Henry Long Rifle Museum RSVP to Naomi

For class cancellations due to inclement weather tune into WDAC 94.5



HELP NEEDED!

T.E.A.C.H. is in need of help in several areas. An organization of this size takes many helping hands. We are in need of individuals or partners for the following positions:

- Coordinator of the Learning Fair (this is a once a year event)
- Coordinator of the TEACH Used Book Sale (also a once a year event)
- Website Administer (this would be an ongoing commitment)

For more information contact the TEACH Board at teacheloop@gmail.com, teachhomeschooler@gmail.com, or call Deb Goodman at 610-678-5452.

T.E.A.C.H. HAS TWO CO-OP LOCATIONS

Mohn's Hill E.C. Church: 708 Mohn's Hill Road, 19608 (off the Gouglersville exit of Rt. 222)
Bethany Grace Fellowship Church: 400 Reading Road, East Earl (Terre Hill Area)



Join us for these Homeschooler-Only Programs!

Check our website for a complete list of events.

Fun with Math for Homeschoolers - Wednesdays, February 6 & 20, 9:30 a.m. Supplement your homeschool curriculum with math lessons at the library. Open to children in 4th-6th grades, this program will present a standards-based lesson with a literary connection. This program is taught by a Pennsylvania certified teacher. *Registration required.*

Fun with Science for Homeschoolers - Wednesday, February 13 & 27, 9:30 a.m. Supplement your homeschool curriculum with science lessons at the library. Open to children in 4th-6th grades, this program will present a standards-based lesson with a literary connection. This program is taught by a Pennsylvania certified teacher. *Registration required.*

Homeschoolers' Book Discussion Group - Every Wednesday in February, 10:30 a.m. In this group, a chapter book is read aloud to the group. We will stop periodically throughout the reading to discuss the book and ask comprehension questions. This is a great way to enhance your reading program and to give your children a chance to discuss books and learn from other children's viewpoints. Ages 6-12. *Registration required.*

Reader's Theater for Homeschoolers - Every Wednesday in February, 10:30 a.m. Reader's Theater is acting out a story using only expressive reading: no sets, costumes or memorization. We'll work on reading with fluency, accuracy and expression as we read short plays ranging from fairytales to classic stories to poetry. Ages 8-12. *Registration required.*

Be An Illustrator! For Homeschoolers - Monday, February 11, 2:30 p.m. Check out artwork in celebrated and award-winning children's books. Then turn your enthusiasm into art, copying the artist's technique to produce your own illustration. Illustrate using collage, "found items," cartooning, painting and more! Ages 8-13. *Registration required.*

550 South Reading Road • Ephrata, PA 17522 • 717-738-9291
Hours: Monday-Thursday, 9 a.m.-8 p.m. • Friday, 10 a.m.-6 p.m. • Saturday, 9 a.m.-5 p.m.

www.ephratapubliclibrary.org



TEACH DRAMA

proudly presents



MEET ME IN ST. LOUIS

Directed by  **MR. STAN DEEN**

TICKETS ~ \$8 IN ADVANCE OR \$10 AT THE DOOR
2:00 MATINEE ~ \$5 IN ADVANCE OR \$7 AT THE DOOR

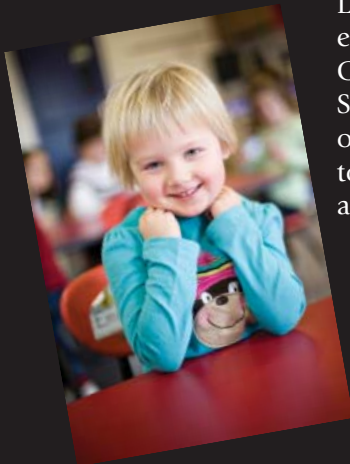
FRIDAY, MARCH 22ND AT 7:00 PM
SATURDAY, MARCH 23RD AT 2:00 PM & 7:00 PM

**FOR TICKETS EMAIL meetmeinst.louistickets@gmail.com OR CALL 717-419-7524
COCALICO MIDDLE SCHOOL 650 SOUTH 6th STREET, DENVER**

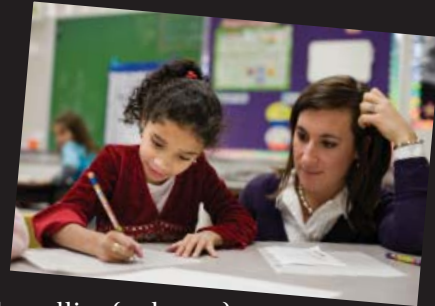


LANCASTER COUNTY CHRISTIAN SCHOOL

University-Model School® Open House



Lancaster County Christian School offers an alternative solution for parents desiring both the gift of time with their children and the services of a Christian school! This cost-effective program is called the University-Model School® (UMS), at the LCCS West Lampeter Campus. Sharing the mission of *Living Education* at LCCS, the University-Model School® was developed to preserve and strengthen the God-ordained family relationship and achieve a high degree of academic excellence.



University-Model School® program highlights include:

- 180-day schedule combining the central (at school) and satellite (at home) classrooms
- Instruction and instructional activities directed by the school's teacher and curriculum
- Elementary school (K-6) meets 2-3 days in the central classroom and 2-3 days in the satellite classroom
- The UMS will expand to secondary (7-12) over the next five years and will utilize a university-style schedule
- Tuition is 40-60% less than traditional tuition
- The model is accredited by a variety of accrediting agencies around the country
- LCCS is a transitioning member of National Association of University-Model Schools® (NAUMS; www.naums.net)
- LCCS is the first NAUMS school in PA; NAUMS has 52 schools in 17 states

Open House Dates

Thursday, February 7 - 6:30 pm

Thursday, February 21 - 9:00 am

Thursday, March 7 - 6:30 pm

Call 717-556-0711, ext 224 to register!

Leola Campus
Traditional Program
2390 New Holland Pike
Lancaster PA 17601

Phone: 717-556-0711 Fax: 717-656-4868

West Lampeter Campus
UMS Program
651 Lampeter Road
Lancaster PA 17602

Phone: 717-392-8092 Fax: 717-392-8982

www.lccs.cc • info@lccs.cc



HACC gives me a way to pay for college.

Financial Aid Event

Thursday, Feb. 21, 2013

Event starts at 6 p.m., ends at 7:30 p.m.

All HACC campuses

(In case of inclement weather, event will be held Feb. 28, 2013.)

It's not too late to get financial aid to help pay for your college education. But how do these programs work? Who is eligible and how do you apply?

Find out exactly what you need to know at HACC's Financial Aid seminar. This seminar is free and open to anyone, not just students coming to HACC. We'll help you understand your financial options and get the process started – all in one night, at all campuses!

Learn about:

- Different types of aid – scholarships, grants, loans, student employment
- Where to look for other sources of aid – and pitfalls to avoid
- How to compare financial aid offers from different schools – and pick what's best for you
- Filling out your FAFSA form – and filing it online

**For additional information, call 717-358-2992
or go to www.hacc.edu/lancaster**

**Lancaster: 1641 Old Philadelphia Pike 717-293-5000 | Harrisburg 717-780-2400 | Gettysburg 717-337-3855
Lebanon 717-270-4222 | York 717-718-0328 | Virtual Campus 717-221-1300 ext. 1510**

HACC recognizes its responsibility to promote the principles of inclusion and equal opportunity in employment and education. Therefore, it is the policy of HACC, in full accordance with the law, not to discriminate in recruitment, employment, student admissions, and student services on the basis of race, color, religion, age, political affiliation or belief, gender, national origin, ancestry, disability (physical or intellectual based challenges), place of birth, General Education Development Certification (GED), marital status, sexual orientation, gender identity or expression, veteran status, genetic history/information, or any other legally protected classification. Inquiries should be directed to the Office of the President, One HACC Drive, Harrisburg, PA 17110, telephone 717-221-1300, ext. 1541.



LANCASTER EVENT WILL BE HELD IN ROOM 222, MAIN BUILDING.

Manheim Area Christian Homeschoolers

www.manheimhomeschoolers.com

****SPRING OPEN HOUSE****

Come see what we're all about!

February 20, 2013

Families interested in learning more about MACH are invited to spend the school day with us on Wednesday, February 20 (or in the event of snow: February 27). Both children and parents are welcome to sit in on any of our morning or afternoon classes. We hope you can join us! RSVP to Sue Snavelly by February 12th, if you plan on attending. (626-4594 or cbsnavely@dejazzd.com)

MACH is a 28 week, academic Co-Op. This means your children will receive all their instruction and homework for science and history. In addition, the upper grades have the opportunity to take writing and literature. This means you don't have to cover this material at home; your student learns to be responsible to another teacher and enjoys class interactions and discussions! It makes school life a bit more fun!

Elementary Program Includes: chronological history from K - 6th grade, covering PA history, too; science with lab work and "hands-on" activities; gym class

Junior High and Senior High Program Includes: World Cultures, Modern American History and World History, Government, Early American and Renaissance and Reformation; Life Science, Earth and Environmental Science, Physical Science, Biology, Chemistry, Anatomy and Physiology; Writing and Literature Classes; Stewardship Class

Enrichment Courses Include: Art, Watercolor Art, Block Art with print making, Small Engines, Computer Basics, Hand Bells, Volleyball, Tumbling, Spanish Cultures, Spanish I, II and III level courses

We are accepting new families for 2013-2014 school year.
Contact Sue Snavelly (626-4594 or cbsnavely@dejazzd.com) for more information.

****A Sneak Peak at Science****

Take a look at what's been happening in our classrooms!



The 5th & 6th graders recently completed a lab, learning about exo and endothermic chemical reactions.

Important Dates to Remember: May 1-4, 2013—Middle School Trip to Massachusetts

Leadership Team: Sue Snavelly, Peggy Esbenshade, Courtney Dunlap, Kim Groff, Bev Rogers

Secretary: LaWanda Miller

Treasurer: Laurie Winters

Enrichment Team: Bonni Greiner, Deb McNece, Gwenda Martin, Sue Snavelly

Join the fun on
Homeschool Day
at the Turkey Hill Experience

March 19, 2013
10 am - 4 pm

Enjoy learning about the food science and quality assurance behind making Turkey Hill Ice Cream and Iced Tea in a delicious blending of science and fun! During this hands-on experience you will learn:

- how to make ice cream - from the raw ingredients to the finished ice cream
- to evaluate product quality through "ice cream cutting" and sampling
- how we taste panel our products
- about pH and its importance in tea and milk quality
- the evolution of our packaging and how we market our products

. . . and much more!

Adults (18-61) \$9.95
Students (5-17) \$7.95
Seniors (62+) \$8.95



Fun in the making.

www.turkeyhillexperience.com 1-888-986-8784
301 Linden St, Columbia, PA 17512, Rt 30 at Columbia/Rt 441 exit

February News

Proverbs 30:5 King James Version

Every word of God is pure:

He is a shield unto them that put their trust in Him.

www.homeschool-life.com/pa/cvhomeschoolers/

Questions??

Email Belinda - celefever@yahoo.com



We are a Christian-based parent-run co-op. We meet 10 weeks (Sept - Nov) and 10 weeks (Jan - April) on Thursdays on Pitney Road in Lancaster. We offer nursery and preschool. Grades K-6 have choir, gym and an elective each semester. Grades 7 and up have 2 electives each semester and Music/Choir. Electives include academic classes and non-academic. Our parents volunteer to teach the classes and fill helper positions. We rely on parent participation and offer activities that parents are willing to organize and staff. This keeps our costs low and affordable for all family sizes and incomes.

Membership fee for 2012/2013 school year - \$90 a family.

Membership fee includes **ALL** classes for **ALL** of your children for **both semesters**. Some classes may require that you purchase certain books or pay additional fees to cover needed supplies but we always try to offer a "no-additional cost" class option for every period and age group. There is a waiting list.

Co-Op Days:

February 7, 14, 21, 28

Moms' Meetings:

February 25

Time: 07:00 PM - 09:00 PM

Topic To Be Announced

Field Trips:

Wolfgang Candy Tour

February 20

Bowling - Rocky Springs

Every Monday

Maple Sugar Tour

February 26

Middle Creek Wildlife

February 27



MARK YOUR CALENDARS!!

CV Homeschoolers
2012/2013

CV Homeschoolers

2013 Spring Co-Op Classes

Nursery

Preschool

K/1 grades - Art, Magic School Bus, Gym, Music/Choir

2/3 grades - Trip Around the World, Habitats, Gym, Music/Choir

4/6 grades - Literature, Art, Ancient Jewish Customs, Gym, Music/Choir

7th/Up grades - Gym, Classic Literature, Finances, Art, Knitting, Speech, Critical Thinking, World Religions, Music/Choir



Winter

Come Discover the Creator through His Creation with these Opportunities for Homeschool Families at Black Rock Retreat

Homeschool Overnight



January 22-23
OR
February 21-22, 2013



The whole family is invited to spend the night at Black Rock Retreat for the Home School Outdoor Education Overnight. The overnight will include: two Creation Exploration sessions, three meals, overnight lodging, two devotion times, and evening activities including night hike, campfire, and stargazing.

Winter Wednesdays

February 6 - March 13, 2013
1:00-3:00pm

Looking for a solution for cabin fever this winter? Homeschoolers ages 8 and up are invited to join us for six consecutive Wednesday afternoons beginning February 6th, 2013. Each afternoon will include an hour of gym time where students will learn the rules and play basic sports, as well as an hour of making a nature-themed craft that will not only be fun to make, but help us to learn more about God's creation.



For more details about these activities and registration forms, visit our website:

www.blackrockretreat.com/homeschool
or call 717-529-3232, extension 125.
Space is limited, register today!



Black Rock Retreat
1345 Kirkwood Pike, Quarryville PA

Debra Bell

Homeschool Testing

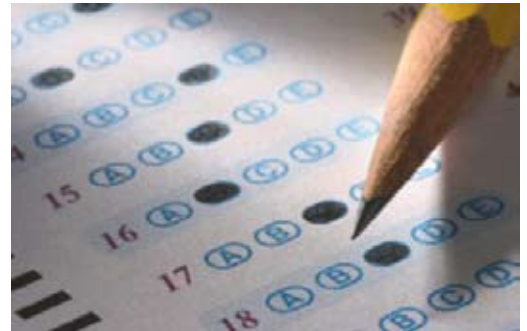
Iowa Test of Basic Skills (ITB)

Grades 3rd-8th

- Mar 27, Grace Chapel, Middletown
- Mar 14 or Mar 15, Calvary Church, Lancaster
- Apr 3 or 4, Christ Community, Camp Hill

Evaluators: We now rent the ITBS for small group testing.

Register @ DEBRABELL.COM



LITITZ HOME EDUCATORS

FEBRUARY 2013

LHE Activities

Middle School Boys Club – 11-14 year old boys are welcome!

"BOYS CLUB: WHO IS MY NEIGHBOR?"

Lesson 4 - Family

1/10 Betty / Isaiah 809 Mt Joy Rd, Manheim 665-6793

1/24 Billy / Meg 31 Limestone Court, Lititz 568 8129

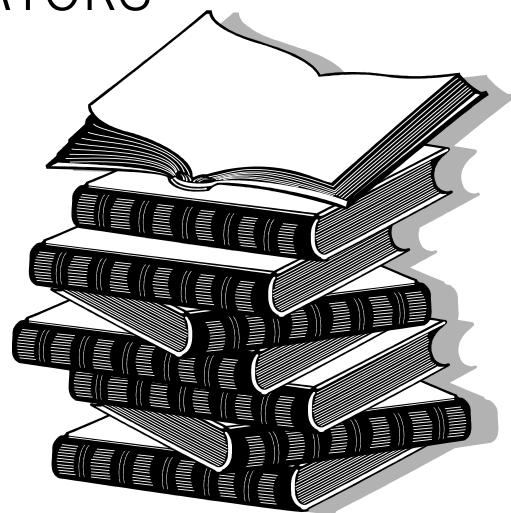
2/7 Adam / Michelle 1249 E. Newport Rod, Lititz

Lesson 5 - Country

2/21 Luke / Andi 421 Donegal Springs Rd, Mt. Joy 653-1892

3/7 Josiah / Karen 322 E. New St., Lititz 626-3188

Call Betty with questions.



Career Night! Thursday January 31

Career Night! Thursday, January 31st at the Lititz Library Community Room from 7-8 pm. Get a taste of a variety of occupations. Adults will share about their jobs in 10-15 min time slots either on their own or in an interview format. Anyone interested in sharing your occupation, please contact me. We are hoping for a wide variety represented—jobs requiring college educations, technical schools, trades, etc... This will be geared for all ages. We'll be asking questions like, "What school subjects do you use on a daily basis", "What do you like best about your job", "What advice do you have for a young person who is interested in your job"? Please consider sharing your career with our children.

Contact Carolyn Martin – martins626@dejazzd.com 626-5183.

Bible Quizzing Team

Open to any 7th-12th graders that are serious about studying the Bible and hiding God's Word in their heart, enjoy relating with other students as they study God's Word, and get motivated by the interaction of friendly, good-natured competition. We meet on Wednesdays from 6:30-8:00 PM for weekly practices. Once a month quiz meets take place on Sunday afternoons (February's meet is 2/24). If interested, contact Steve & Debbie Spangler starspanglers@frontiernet.net 656-8565 for more info.

Discover Earth Exhibit

I am interested in organizing a group to view the Discover Earth exhibition at the Ephrata Library. We need at least 10 students to sign up for the program. Extensive information on this exhibit can be found on the Ephrata library website at the bottom of the home page (see the Discover Earth link). Anyone who would like to be part of a docent-led group tour in May or June, please contact Jill Gormley (jillanngormley@gmail.com). Space is limited and we would need to reserve a group tour early.

2012-2013 LHE Classes

Junior High Literature Class (7-8th grades, and possibly 9th grade)

Michelle Deckard will be teaching a weekly literature class starting in September, 2012 through April, 2013. The class is held on Tuesdays from 1-2:30 PM. The Yearling by Marjorie Rawlings will be taught in January. Cost is \$60 for the year. Contact Michelle Deckard at michelle.faitin1@gmail.com

Other Opportunities

Tutoring Option

Physics, Math and physical science tutoring will be offered by an experienced tutor and teacher on Wednesdays from 1:35-2:35 in lower level room 108 of Lancaster Evangelical Free Church of Lititz. Tutoring rates are \$20/hour with a minimum charge of \$5. Call Colleen Ream at 717-476-5802 for more details.

The March newsletter items are due February 7th.

Please send items in ready to print form in the body of an e-mail to Joy Glick at glickfamily@hotmail.com.

THE HOMESCHOOLER'S PIANO TUNER

In my 13 years' experience tuning, repairing, and moving pianos, I've found homeschoolers to be my best clients. Please call if you'd like me to take a look at your piano.

MICHAEL E. OWENS
REGISTERED PIANO TECHNICIAN
Homeschooled through Highschool - Class of '92

Lancaster • Lebanon • Berks



Note Worthy
Music Services

(717) 572-2078



**MENGES
MCLAUGHLIN, P.C.**
ATTORNEYS-AT-LAW

- Personal Injury
- Workers' Compensation
- Family Law
- Real Estate
- Non-Profit
- Church Law
- Tax Law
- Social Security Disability
- Criminal Defense
- Estates, Wills, Trusts
- Elder Law
- Employment Law
- Municipal Law
- Civil Trials
- Commercial Collections
- Business/Commercial

WWW.YOURLAWFIRMFORLIFE.COM

1-866-464-5297

Lancaster-Mechanicsburg-Gettysburg-York



Se Habla Español

ART CLASSES & CAMPS

Age 6- adult Drawing or Watercolor January - May



CRYSTAL REFLECTIONS

ART STUDIO & GALLERY

Crystal Dull, B. A. ART from MU

Gift Certificates Fine Art Custom Art

Afternoon & Evening Classes Jan-May...Fall

Day Camps: Drawing June 17-21

Watercolor August 12-16

Rear 1726 Old Rothsville, Road, Lititz, PA 17543

CrystalReflectionsArt.com 717-419-9566



A Night of Time Travel

Family Sleepover

National Watch & Clock Museum

March 1, 2013
7 pm until 8 am

For
kids
ages 6
to 12.

Take a
journey
into the
history &
science
of time!

Registration is required and space is limited. Please call
717-684-8261, ext. 237 for reservations and details. \$20 per child, \$12 per adult.

State Representative

Gordon Denlinger

Serving the residents of Eastern Lancaster County

Contact us for assistance with

- Tours and Information
- Publications and educational materials
- Affidavit notarization
- Any other state government related matter!

District Office

390 E. Main Street
Suite 301

Ephrata, PA 17522

717-733-4002 (p)

717-733-3992 (f)

Harrisburg Office

PO Box 202099

Harrisburg, PA 17120

717-787-3531 (p)

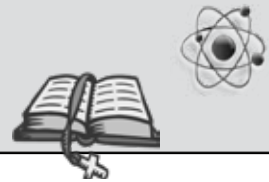
717-705-1986 (f)



Free notary services available for homeschool affidavits!

C.H.A.S.E.

Christian Homeschool Academy of Scholastic Excellence



It is the vision of CHASE to equip and encourage parents who have chosen to home school their children by providing 1) quality educational opportunities in a Christ-centered environment, 2) classroom experiences that will develop the students' understanding of responsibility and accountability, and 3) a safe place where students and parents alike can develop solid friendships. The CHASE leadership team desires to minister to all families who choose to participate in the program by prayerfully seeking God's plan for the organization.

Our classes meet on Mondays from 8:30 a.m. to 2:00 p.m. at East Fairview Church of the Brethren in Manheim.

Calendar of Events

- **Monday, February 11, 6:00pm** – CHASE Chargers – girls basketball home game
- **Wednesday, February 20, 2:00pm** – Science in the park – Maple Sugaring
- **Wednesday, March 20, 2:00pm** – Science in the park - Bird Dissection

2012-2013 CHASE Days

Classes for the spring semester run from January 7 and end April 22.

We are accepting names for our **2013-2014 waiting list**.

Below are some of the 2013-14 MS/HS classes that will be offered:

Science (Apologia)

Zoology 3
Chemistry/Physics
Physical Science
General Science
Chemistry
Anatomy & Physiology
Biology

History

US Presidents
Mystery of History 3
World Geography
Maps & Graphs
World History 3
American History

English

IEW Writing
Creative Writing
MS Lit
MS Writing
Speech
Research Papers
American Lit
Intro to Lit

All MS/HS classes that are not full are open to families desiring a non-participating membership that allows them to enroll students in individual classes, for a set fee per class. E-mail Rachel at chasecoop@comcast.net for more information.

For information about C.H.A.S.E., visit our website at

www.chaseacademy.org

Rachel Mohler, Director (717) 584-5105

Leadership Team: Krista Arnold, Sarah Brown, Alura Hameloth, & Renee Heisey

Uniting in prayer and friendship. ✝ Building Christ-centered academics. ✝ Serving each other in love.



Lancaster Symphony Orchestra

STEPHEN GUNZENHAUSER—MUSIC DIRECTOR

FREE

Open Rehearsal Brahms & the Prodigy

Thursday, February 21, 2013

from 3:00 to 4:30 pm

Fulton Opera House

Saint-Saëns

Piano Concerto No. 2

featuring young pianist Anita Pari

Brahms

Symphony No. 4

Want to learn more about Classical music? We make it easy and free! Audiences of all ages enjoy the music much more when they understand what the composer was trying to do. We'll present a running commentary on large display screens to guide you in what to listen for, and when. Bring friends, children, and grandchildren—they'll all enjoy the free concert and learning experience.



High School Science Classes

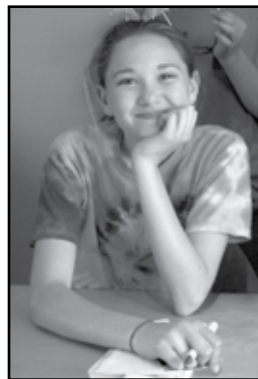
taught by Galen Hershey

Chemistry Classes are scheduled for September 2013 through April 2014 on Fridays 9:20am - 10:50 am. The course covers all aspects of high school Chemistry including atomic structure, nomenclature, reactions, aqueous solutions, chemical composition, atomic theory, stoichiometry, chemical bonding, gases, solutions, acids and bases, equilibrium, electrochemistry, and intro to organic chemistry. Classes will consist of lectures, labs, homework review, and periodic tests. Students must have completed Algebra 1. Cost of the course is \$260.

Physics Classes are scheduled for September 2013 through April 2014 on Fridays 7:40am - 9:10 am. The course covers both theory and problem solving. Topics include motion, force, vectors, gravity, momentum, machines, energy, wave motion, sound, light, electricity, magnetism, electronics, quantum theory, and nuclear energy. Classes will consist of lectures, labs, homework review, and periodic tests. Students must have completed Algebra 1. Cost of the class is \$260.

Earth Science Classes are scheduled for September 2013 through April 2014, Fridays 11:00am - 12:00pm with extended class time on field trip days. Topics covered will include Geology, Paleontology, Topography, Environmental Science, Oceanography, Meteorology, and Astronomy. Some parents will be needed to drive for field trips which will include a rock collecting trip to Cornwall, a fossil hunting trip to PineGrove, a stream life cycle study, weather station tour, and a model outdoor solar system. Cost of the class is \$260.

All classes are held at 1607 N. Penryn Road, Manheim. If interested or for more information contact Galen at galen_hershey@yahoo.com or 665-3556.



Creative Writing Rocks!

Creative Writing Classes for Adults, Children and Teens

Of course pizza has wings! Trees discuss the fall! Awaken to the wonder of writing, not the rules. Through warmth, kindness & a touch of mischief, we jumpstart original ideas & keep them coming. Rediscover fun, focus, and imagination...in a spirited atmosphere where it's cool to be yourself. No grades, pressure, competition, or anxiety.

Write from the Heart

Inspiring and Supporting the Creative Spirit



Melissa Greene

717.393.4713

www.writefromtheheart.us

melissa@writefromtheheart.us

The Learning Station



About Us

The Learning Station Homeschool Group is a parent-run organization dedicated to providing mutual support to each other as we homeschool our children. Offering classes for all ages (infant-12th grade), we meet at the Lancaster Evangelical Free Church in Lititz on Wednesdays for fall and spring semesters. Learning Station members receive first choice of high school classes, but, after they register, our Upper Level 7th-12th grade classes (with the exception of drama) are then open to non-members in the homeschooling community.

If you are interested in more information about becoming a Learning Station co-op member or to obtain an application, please contact Debbie Spangler via e-mail starspanglers@frontiernet.net.

Please contact Joy Glick at the Upper Level e-mail (upperlevelclass@aim.com) if you would like more information about registering your high school students for the Learning Station Upper Level track courses. For the schedule of 7th-12th grade classes or for more detailed information, access the Upper Level website at www.upperlevelclasses.com

The Learning Station Calendar Spring 2013 Semester

Wednesday, January 9
Wednesday, January 23
Monday, March 11 or 18
Tuesday, March 12 or 19
Wednesday, March 13
Wednesday, March 20

Wednesday, April 3
Friday, April 5
Friday, April 5
Friday, April 9

ULA Spring Semester Begins
Co-op/ULB Spring Semester Begins
Achievement Testing Day 1
Achievement Testing Day 2
Used Book/Curriculum Sale
Spring Break OR Snow Make-up Day for Co-op and ULB Classes Only (Curriculum Fair Snow Date)
Last Class for Co-op/ULB Spring Semester
Track & Field Day
Closing Program
Drama Production



COMING IN MARCH SCRAWLS...

Class Listings & Registration Information for the 2013-14 Upper Level Classes

Or

Check our website after February 10th

www.upperlevelclasses.com

The Learning Station Curriculum Fair

Open to entire Lancaster County Homeschooling Community this year!

Attention Homeschoolers!
You are invited to our annual Curriculum Fair/Used Book Sale

Wednesday, March 13th, 2013
(Snow Date: March 20th, 2013)
at

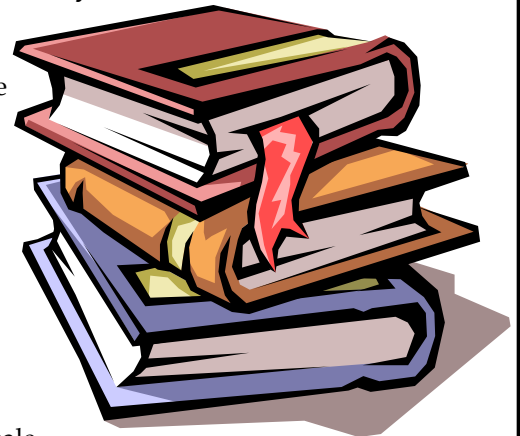
The Lancaster Evangelical Free Church
419 Pierson Road, Lititz, PA 17543

12:30 - 4:00PM

(Questions: Contact Debbie at starspanglers@frontiernet.net)

Please bring small bills/coins so you can pay in exact amount of sale.

We will not be able to make change for you.





Spring Schedule 2013

9:00-9:15 Spring Elementary Chapel – Rhonda Urban

<i>Grade</i>	Session 1 9:20-10:10	Session 2 10:15-11:05	Session 3 11:10-12:00
Infants & Toddlers	Chris Freeman Abi Dougherty	Abi Dougherty Robyn Sowada	Robyn Sowada Marj Spang
2s & 3s	Julie Zimmerman Sonya Lanford	Julie Zimmerman Sonia Weidner	Sonia Weidner Allison Harnish
PreK/K	Missionaries Heidi Weidler Jen Richter	Physical Education Marie Acebo Tanya Beakes	Literature/Music Marie Acebo Kara Henson-Oliver
1 st & 2 nd	Art Karen Maier Karen Hullinger Tanya Beakes	Science Heidi Weidler Karen Maier	Physical Education Leigh Ann Rohrer Lori Weaver
3rd & 4th	Musical Sunny Redcay Lori Weaver	Science Tanya Shuke Rhonda Urban	PE Jodi Schwartz Jen Richter
5 th & 6 th	(Musical cont) Jodi Schwartz Alice Nelson Mim Herr	Physical Education Jen Coryell Shawna Burghart	Science Dean Zook Lisa Zook



UPPER LEVEL COURSES 7th -12th GRADES

(For more information go to www.upperlevelclasses.com or email at upperlevelclass@aim.com)

9:00-9:15	TEEN OPENING – worship and devotional open to all Upper Level teens			
9:20-10:50	Physics	Chemistry	Biology	Beginning Sewing
10:55-11:55	Physical Science	Geometry	NT Greek	Spanish I
12:00-12:25	LUNCH			
12:30-1:30	Astronomy	Woodcarving	Watercolors	
1:35-2:35	Psychology	Jr High Literature	Write the Novel/Novelette Way	
2:40-3:40	Drawing	Creative Writing	American History	
3:45-4:45	Poetry			
1:30-4:45	7 th - 9 th Grade Drama (Co op Track ONLY)			

Christian Home Educators Exchange (CHEX)

(formerly known as WHEE)



Mission Statement

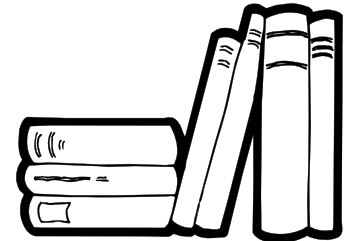
CHEX exists to glorify God by functioning as a Christ-centered homeschool co-op for the whole family. With a spirit of mutual encouragement, we seek to use the gifts of each member, to build godly character, to fellowship in unity, and to promote educational excellence.

General Information

- CHEX Mix-N-Match meets **Monday mornings** for 8 weeks in the fall and 8 weeks in the winter at Westminster Presbyterian Church. Dates for this year: Sept. 24 – Nov. 12, 2012 and Feb. 5 – March 26, 2013.
- Mix-N-Match has classes from infant through grade 12. **Upper Level classes (grades 9-12) meet an additional 8 weeks for a total of 24 class meetings.**
- Our primary students take 2 supplementary classes and a gym class, while secondary students have a choice of academic and elective classes.
- A foundation of CHEX is our **Moms' Prayer & Share** meetings. During the three hour-long Mix-N-Match classes, each mom serves for 2 hours, and has 1 hour of Prayer & Share.
- For more information, see our website- www.homeschool-life.com/pa/chex

Upcoming Events

- Monday, January 28- Annual Moms' Meeting at Westminster- 7:00-8:30
 - Thursday, February 28 - Monthly Moms' Get Together at Prince St. Café- 7:30-9:30
- See website for more information about these events.



HANDI* CAMP NEEDS STAFF!!

Is your TEEN looking for an opportunity to serve God this summer?

Homeschool teens, ages 15 and up, needed on the Service Staff team at our overnight camping program for people with disabilities.

*Main Duties - Cleaning & Serving Meals
Opportunities To Interact With Campers; Not A Counseling Position.
Salary Is \$140 Per Week Plus Room And Board.*

Staff Orientation May 22-26; Camp Session #1 Starts May 27
Program is six weeks, but first three (May 27-31, June 3-7 and June 10-15) are greatest need.

HANDI* CAMP HIRES ADULTS (AGES 19 AND UP)

- ♦ Counselors, Bible Teachers, Lifeguard & Program Assistant.
Salary is \$200 per week plus room & board.
- ♦ Assistant Nurses (LPN or RN) also needed for most sessions.
Salary is \$260 per week plus room & board.

Interested In Learning More?
Call Or Email: Brian Robinson, Assistant Director
717-859-4777 HandiCamp@hvmi.org

Sponsored by Handi*Vangelism Ministries International
(Christian mission agency with office in Ephrata, PA)
www.hvmi.org



Irish Dance Lessons



Need a Gym Credit?

Find out why so many
homeschoolers have chosen
**Hooley School of
Irish Dance!**

- * Located in Ephrata Twp.
- * Weekly classes for all ages
- * St. Patrick's Day education
- * Classes taught by home school graduates
- * Performance & competitive opportunities

Learn more! Call today
(717) 271 - 8611

www.hooleyirishdance.com
Photo courtesy of Jonathan Ireland

Unlock Your Child's Potential at

SpeechCare



Articulation Therapy
Stuttering Therapy
Reading Tutoring
At-home Services via Internet

2137 Embassy Dr. #103 Lancaster, PA
(717) 569-8972
www.speechcare.com

Zeltenreich Reformed Church 2013 Conference

When: **Friday and Saturday, February 8-9, 2013**
Where: **Zeltenreich Reformed Church
752 Hollander Road
New Holland, PA**

Conference Theme: *Turning Your Marriage Right-Side Up*

Speaker: **Dr. Timothy Z. Witmer**



A native New Hollander and Garden Spot High School alumnus, Timothy Zimmerman Witmer (D.Min., Reformed Theological Seminary) is professor of practical theology and coordinator of the practical theology department at Westminster Theological Seminary. He has served as senior minister of Crossroads Community Church in Upper Darby, PA since 1986 and is the author of

The Shepherd Leader: Achieving Effective Shepherding in Your Church and *The Shepherd Leader at Home: Knowing, Leading, Protecting, and Providing for Your Family.*

Refreshments will be served.
Cost: \$10.00 (in advance), \$12 (at the door)
[Under 18: Free of Charge.]
For more information, call (717) 656-2499.
or go to: www.zeltenreich.org



PEEC
Pocono Environmental
Education Center

Homeschool **WINTER SPECIAL**

Students, ages 4-16, will enjoy an EcoZone! Tour and a Sustainability Hike.

Classes at PEEC meet science requirements for NJ, NY, & PA!

Tuesday, February 12, 2013
10AM-2PM
Register by February 5th

Tuesday, March 26, 2013
10AM-2PM
Register by March 15th

40 years of teaching
Environmental Education
in a National Park

**\$15
PER
STUDENT**



Includes 2 classes.
Bring a lunch & dress
for the weather!

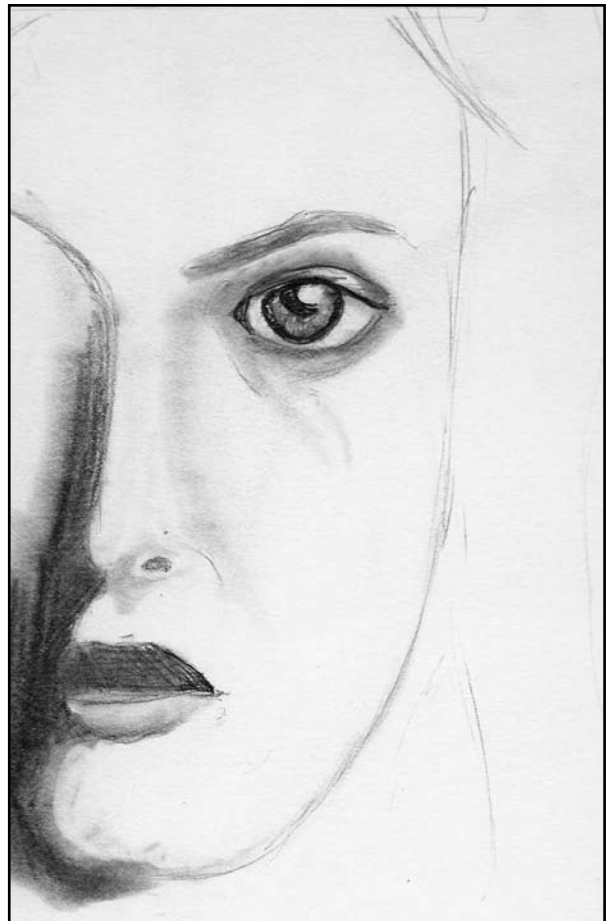
**Adults and children
under 3 - Free**

POCONO ENVIRONMENTAL EDUCATION CENTER 570.828.2319
538 Emery Road • Dingmans Ferry, Pennsylvania 18328

PEEC is close to home,
where learning comes naturally!

PEEC is located off of Route 209 inside the Delaware Water
Gap National Recreation Area in Dingmans Ferry, PA

WWW.PEEC.ORG



Homeschool Artwork by Caleb LeFever, age 16



CHALC Membership Fee Rebate Form

To better serve our members, who are in more than one CHALC support group, the CHALC Board has created a rebate program for the 2012/2013 school year.

The CHALC support group membership fee for the 2012/2013 school year is \$20 per family. Members who join multiple CHALC support groups (listed in the back of *The Scrawls*) and have paid the \$20 CHALC membership fee more than once may apply to CHALC for a rebate.

Instructions:

Continue to join the CHALC support groups as you normally would, paying all fees and completing the normal paperwork. After you join, each CHALC support group will send your name into CHALC. You need to complete and send-in this rebate form along with a self-addressed stamped envelope to CHALC, PO Box 480, Leola, PA 17540. After CHALC confirms your membership with each group, we will send you the rebate. Please allow 4 - 6 weeks for processing. Your rebate form for the 2012/2013 school year must be received no later than May 1, 2013.

Rebate Amounts - Check One:

- Member of 1 CHALC support group - You paid \$20 in CHALC membership fees - No rebate
- Member of 2 CHALC support groups - You paid \$40 in CHALC membership fees - \$15 rebate
- Member of 3 CHALC support groups - You paid \$60 in CHALC membership fees - \$35 rebate
- Member of 4 CHALC support groups - You paid \$80 in CHALC membership fees - \$55 rebate

(CHALC is reserving a \$5 fee for increased administrative costs associated with maintaining accurate membership lists as required by our insurance agreement.)

Name: Husband's First Wife's First Last

Mailing Address: Street

City State Zipcode

Email Address Phone Number

Check which support groups you are a member of:

- | | |
|--|---|
| <input type="checkbox"/> C.H.A.S.E. | <input type="checkbox"/> CHEX |
| <input type="checkbox"/> Conestoga Valley Homeschoolers | <input type="checkbox"/> Cornerstone Homeschoolers |
| <input type="checkbox"/> Lancaster Area Catholic Home Educators | <input type="checkbox"/> Lititz Home Educators |
| <input type="checkbox"/> Manheim Area Christian Homeschoolers | <input type="checkbox"/> Solid Foundations |
| <input type="checkbox"/> TEACH | <input type="checkbox"/> The Learning Station |

Mail rebate form to: CHALC, PO Box 480, Leola, PA 17540

General Announcements / Items For Sale

Items included on this page are on a space available basis and are not guaranteed for submission. Please keep submissions to 75-words or less of standard type. Scrawls editor retains the right to edit submissions accordingly. For guaranteed submission please consider a paid ad.

High School Chemistry, Physics and Earth Science

High School Chemistry, Physics and Earth Science classes for 2013-14 will be taught by Galen Hershey at his home. Please see ad on page 19 for more information.

Babysitting Course

The Hempfield Woman's Club and Women and Babies Hospital of Lancaster General is sponsoring a babysitting course for grades 6, 7, and 8 on March 16 and 23, 2013 at the Hempfield Area Recreation Commission from 8:50 am to 12:00. Students participate in sessions with a fireman, policeman, and nurses of Women and Babies Hospital. There is a \$12 fee which is non-refundable. Applications can be picked up at HARC and Women and Babies Hospital.

Bible Quizzing Team

Interested in being on a Bible Quizzing Team? Our team is open to any 7th - 12th grader that is serious about studying God's Word and hiding it in their heart, enjoys relating with other students as they study the Bible, and gets motivated by the interaction of friendly, good-natured competition. We meet on Wednesdays from 6:30-8:00PM. If interested, contact Steve & Debbie Spangler starspanglers@frontiernet.net or 656-8565.

History Contest

5th - 8th graders may enter. More info: 717-520-5587 or www.HersheyStory.org - Deadline 2/15/13

LaCrosse

GSMAA (Garden Spot Midget Athletic Association) Boys and Girls Youth(grades 3-8) lacrosse registrations will be 1/22 and 1/29 at Petra Christian Fellowship , New Holland from 7:00-8:30. Also, GSMAA will be holding a "FREE" open "learn to play" on 1/17 for boys and 1/24 for girls in the MS gym from 6:00-7:15. For more information contact GSMAA at jtmclj@gmail.com or jrhockeymom@mail.com

Class of 2014

Attention Juniors who are planning to graduate with the CHALC Class of 2014; if you are interested in getting to know some of the other students that will graduate with you email Debbie Spangler at starspanglers@frontiernet.net.

Eldonna Marie Filardi

Piano Lessons / Age 7 through Adult

Voice Lessons / Age 14 through Adult

Degree in Piano and Vocal Performance

25 plus Years Teaching Experience



(717) 733-3852



CHALC Board Monthly Meeting Minutes January 3, 2013, 6:30 p.m., Spangler Residence

CHALC Board Members Present:
Sharon Martin, President
Mark and Jenny Espenshade, Vice President
Chris and Jodi Fieger, Treasurer
Chris Freeman, Assistant Treasurer
Also Present:
Belinda LeFever, Scrawls Editor
Absent:
Steve and Debbie Spangler, Corresponding Secretary/Web
Paul and Sophia Schwarz, Recording Secretary

Opening prayer by Sharon
Minutes — approved as submitted
Treasurer's Report (by Jodi) — approved
Discussion of financial and insurance issues
Update on content to be added to website
Discussion of Scrawls business
Graduation — planning for January meeting, reports on committee activities
Planning for support group leaders breakfast on March 2
Discussion of efforts to identify new board members
Planning for "Think First" seminar in April 1
Planning to distribute "Guide to Life After High School" manual
Setting of future board meeting dates — February 7 at Spanglers, March 7, April 4
Closing prayer by Chris Fieger



Evaluators

If you would like to be added to our evaluator list please send us your information. Be sure to include your name, phone number, and grades you can evaluate. You are allowed a total of 20 words to tell about yourself. Send the information to CHALC, P.O. Box 480, Leola, PA 17540 or email scrawls@chalc.org

Barbara Morrison, M.Ed.

(717) 397-1722 mlbamorrison@verizon.net

Homeschool mom/evaluator 14yrs, tutor & PA certified teacher; achievement testing, K-12th Mason-Dixon & Susquehanna Valley diplomas. discounts.

Renita Gerlach

rod.ren@hotmail.com 627-4335

Secondary PA certified, 7 - 12. PHAA, SVHDP, & Mason-Dixon. Convenient central location, 2 min. off 222 Akron exit. Sibling Discounts.

Deb Haldeman

717-664-2448 ldhaldemian1353@juno.com

Homeschooled and graduated 3 children. Current K-8 substitute elementary - grade 8 evaluator (short form)

Bonita Greiner

(717)665-6854

Manheim Area, Homeschool mom, elementary (short form), secondary; PHAA and Buxmont diploma. Also consultations for curriculum and credits for diploma.

Sharon Cody

(717)484-0685

elementary

Lindsay Reed

(717)665-3667

elementary

Don Hoover

2 Sharp Avenue, Denver, PA 17517-9779
(Located in Reamstown) 717-336-2596

He is a PHAA evaluator for HS. He has many years of evaluating experience at every grade level.

Maria Russo

km3russo@msn.com 717-569-3750

K-12, MD & Parent Diplomas only. Reading testing by appt. Lancaster and Surrounding areas. New Students Welcome

Ellen Campbell

393-0953 mark.ellen.campbell@gmail.com

Homeschool mother, K-12, PHAA and Susquehanna Valley diplomas, Lancaster/Lititz area

Nanette Blank

717-653-6931 nanetteblank@hotmail.com

Certified K-12 math, science and technology with eclectic experience. Provide evaluations, PHAA, individual testing, tutoring and science labs.

Amy Stigelman

73 Quaker Hills Road, Lancaster 871-0472

Dual certified in elementary and special education. Will evaluate k-12 and tutoring available.

Mark Krans

(508) 207-7322 markkrans@gmail.com

Evaluations for Secondary Students

Annie Barge

(717)361-7691 thebargecrew@gmail.com

Elementary through 8th grade short-form evaluations.

Steve Schulz

(717)656-2499 jostecin@juno.com

Secondary - Leola area, Homeschooling my children, Certifications in Chemistry, Mathematics. 17 years Public HS teaching experience. Mason-Dixon & PHAA diplomas.

Michael C. Buonomo, MA

Licensed Clinical Psychologist; Narvon, PA
(717)768-4603 mbuonomo@comcast.net

Homeschool parent, Christian approach, all levels of diagnostic & achievement testing, developmental disabilities, K-12

Patricia Glah

941-400-6474 pmglah@aol.com

Special Education Certified, Elementary and Secondary; Susquehanna Valley Homeschool Diploma Program; 40 years teaching experience. PA State Certified teacher.

Mary Liz Youtz

717-285-7954

K-12 with PA HS diploma/transcripts. 21 years experience evaluating/teaching children. I would enjoy working with your family.

Susannah Benson M.Ed.

464-0963

Evaluating homeschoolers since 1988. Wide Range Achievement Test. PHAA diploma. Willow Street Area.

Courtney Dunlap

310 Farm View Drive, East Earl, PA 17519
717-351-5049 717-951-3792
cdunlap310@comcast.net

Christian homeschooler, 15+ years experience. Special Education Certified, K-12 evaluations. Evaluations/transcripts for PHAA, Mason Dixon, Erie, & Susquehanna Valley diplomas.

Donna Botterbusch

981 E Canal Rd., Dover, PA 17315-2717
717-292-5379 orbital-enterprise@juno.com

All grades by appt., WRAT-4 testing; Approved York Co Districts, w/permission in Lancaster/Dauphin counties. Homeschool mom for 21 years.

Karen Davis

27 Harrison Drive Quarryville (Georgetown)
717.806.0314 jimkaren123@epix.net

PA certified Special Education, K-12, experience as homeschool mom and public school teacher, diploma programs: Mason-Dixon, Susquehanna Valley, reasonable rates

Jennifer Martin

717-244-1565 martinsrwe@yahoo.com

Special Education Certified; PHAA Diploma Transcripts; EVALUATING ALL AGES; DISCOUNTS FOR LARGE FAMILIES; Editor recommended.

Anjie Vago

(717) 361-8516 mamavago@aol.com

Homeschool mom. Several years' experience evaluating elementary - 8th. Consulting, tutoring, and Stanford testing also available.

Bonnie McKenney Gish

bonnie.gish@gmail.com

Elementary & High School evaluations; SVDP & Mason Dixon; experienced homeschooler, teacher, & evaluator. Specializing in adapting curriculum to learning styles, All homeschool styles

Iris Lehman

(717) 898-0312

K-6 evaluator Hempfield. Ten years experience in elementary/middle school education. Certified Reading Specialist. Stay-at-home mother of three.

Tracy White

397-7255 whities@verizon.net

K-12 Evaluations. Curriculum planning. Public School experience. Tutoring for elementary. Reading Testing. Parent Workshops, NOTARY SERVICES. Lancaster, Reasonable, Christian. References.

Karen Byers

717-656-8280 kbyers@comcast.net

PA certified teacher; home school teacher and evaluator, 1992-present; Elementary, Secondary, Special Ed certified; Mason Dixon Diploma

Michele L. Zook

717-271-9860 michele@zook.com

Math Tutor Grades 1-6; PA Certified Elementary Education/Early Childhood; Master's Degree

Sharon Cargill

roseofsharon98@aol.com 560-0133

Elementary and Secondary PA certified teacher. Manheim Twp, home schooled over nine years. short and long form evaluations .Sibling discounts.

Wendy J. Bush, Executive Director

410-552-5004 pa-evals@comcast.net
www.theexcelsioracademy.com

The Excelsior Academy, Elementary & Secondary Evaluations diplomas, all methods, Graduation Ceremony, High School / College / Career Counseling

Nancy Sebastian Meyer, M.Ed.

392-3662 sebastianmeyer@comcast.net

BS in Bible, M.Ed., PA Certification K-8 / 20 years evaluating / experienced homeschool mom / sibling discount / extra "Personal Profile" available

Anne Morgan

(717) 519-9751 morgan03@ptd.net

Secondary- Certified in Biology, General Science, K-12 Environmental Education. Christian mom in the Lititz area. Also tutoring 7-12.

Lisa Buckwalter

717 - 435-7057 lisaetc@verizon.net

Pennsylvania Certified in Special Education, Master's Degree in Learning Disabilities, 30 years experience, tutoring, testing, evaluations.

Kathryn Walker

717-572-9015 kathrynlynnwalker@gmail.com

Secondary Evaluations. Leola area. M.Ed and PA Certification in English. Transcripts for PHAA and Mason Dixon.

Lancaster County Homeschool Support Groups

C.H.A.S.E. Academy

(Christian Homeschool Association of Scholastic Excellence)

www.chaseacademy.org

Rachel Mohler, Director, 584-5105

chasecoop@comcast.net

A Christian co-op offering weekly classes. We meet on Mondays from 8:30 am to 2:00 pm, at East Fairview COB in Manheim. Classes are a 30 week commitment. Opportunities include academic and elective courses, music, sports, and field trips. Our mission is to equip and encourage parents who have chosen to homeschool their children by providing educational classroom opportunities in a Christ-centered environment. Members must participate by teaching or helping in classes for the benefit of the group.

CHEX (formerly WHEE)

Renita Gerlach 627-4335 chexcoop@yahoo.com

Becky Kauffman 397-1359 chexcoop@yahoo.com

CHEX is a group of homeschool families joining together to fellowship, encourage each other in our life's journeys, and provide excellent group learning opportunities for our children. We meet on Monday mornings from 8:45 - 12:00 at Westminster Presbyterian church, eight weeks in the fall (Sept. - Nov.) and eight weeks in winter (Feb. - March).

Conestoga Valley Homeschoolers

Belinda LeFever celefever@yahoo.com

www.homeschool-life.com/pa/cvhomeschoolers

We are a Christian-based parent run co-op. We offer nursery and preschool. Grades K - 6 have choir, gym and the choice of an elective each semester. Grades 7 and up choose 3 electives each semester. Electives include academic (ie: Biology Labs) to non-academic (ie: cross-stitching). We are a supplement to your homeschooling. Besides co-op classes we offer monthly moms' meetings, a choir concert, talent show, music classes, gym classes, Track & Field day, field trips, and a learning fair. Our parents volunteer to teach the classes and fill helper positions. We rely on parent participation and offer activities that parents are willing to organize and staff. This keeps our costs low and affordable for all family sizes and incomes. We meet Thursdays from 12:45 - 3:25pm in the Lancaster Area. There is a waiting list.

Cornerstone Homeschoolers

Lower Tier

Melissa Stoltzfus

Teresa Maier

hempfieldhomeschoolers@hotmail.com

www.hempfieldhomeschoolers.org

We are a Christian support group that provides classes, music, gym, sports, field trips, and parent meetings for our members. We meet Thursday afternoons at Grace Baptist church in Lancaster. Parents are expected to be present and participate on all co-op days. After their first year with the group, parents are expected to teach. Membership is limited to about 75 families.

Upper Tier

Delia Read - hatslanaster@gmail.com (director)

Cornerstone Upper Tier is a 30-week educational program for students in 7th -12th grades. Classes are taught by professionals in the areas of science, literature, writing, art, foreign language, and social studies. Tuition is required. Sign up April through August. No waiting list. Information can be obtained at the Upper Tier Website www.homeschool-life.com/pa/cornerstone



Lancaster Area Catholic Home Educators

(LACHE)

Sally Morgan 892-1120 jnsmorgan@earthlink.net

Yvette Freeman 293-9464 homeschool4jmj@verizon.net

We are an association of Catholic homeschooling families from all parishes throughout Lancaster County united by our fidelity to and love for the Catholic Church. All learning styles and home schooling methods are welcome including part-time school and cyber schooling. We have an active, moderated online message group - lacheonline@yahoo.groups.com - for announcements, prayer requests, advice, and support. Our activities include mom support meetings, field trips, group activities for specific ages, toddler through teens, depending on the needs of the group. Specific classes are arranged by members and are open to all who are interested.

Lititz Home Educators

New Member contacts:

Jen Richter- 327-8064 jennifer.richter77@yahoo.com

Meg Eichorst- willmeg5@yahoo.com

Lititz Home Educators is a loosely knit group of home schooling families from Lititz and the surrounding communities. Membership in LHE can be an invaluable tool for asking questions, finding resources, buying, borrowing, and learning about opportunities. It is also a great way to network with other homeschoolers. We are predominately Christians who have joined together to support one another and coordinate a wide variety of activities as we educate our children at home. We do not require a signed statement of faith for membership, yet our group is founded on Jesus' example of servant hood. We are not a weekly co-op, and, therefore we do not have a central facility or regularly scheduled meeting times. Rather, each year we accomplish what our moms/families are willing to initiate and do to serve everyone. LHE members are asked to contribute to the group each year. This could be organizing a field trip, a class on any subject or hobby, a show and tell, a moms' meeting, or anything that might be of interest. WE are loosely organized under a volunteer board which anyone is welcome to join. New ideas are highly coveted as well! Registration deadline is May 21st for returning members. New families are always welcome. This year our focus is on a career challenge. Ask us about it! Visit our web page to browse our upcoming events and information on joining: <http://www.homeschool-life.com/pa/lhe>

Manheim Area Christian Homeschoolers

www.manheimhomeschoolers.com

Leaders:

Sue Snavelly: cbsnavely@dejazzd.com

Peggy Esbenshade: shadyzoo6@comcast.net

We are a Christian group providing classes for nursery through high school. We meet on Wednesdays from 9 -12 for 28 weeks. An optional afternoon program of classes is available. Classes include academic and elective courses. Members are required to participate by teaching and helping in classes. A limited number of high school students may attend without parental participation in the group. Our goal is to provide quality academic and elective courses to enable families to home-educate their children.

Solid Foundations

Karen Greer klsgreer@gmail.com

We are a Christian co-op that meets every other Tuesday at Living Stones Fellowship in Peach Bottom, PA. We offer classes for Pre-K 1 12th grade with 8 bi-weekly sessions in the fall and spring. We hope to provide experience in a classroom setting that promotes responsibility an accountability with a spirit of unity and compassion for one another, while encouraging homeschool families in southern Lancaster county. New families are welcome.

TEACH

(The Educators Association of Christian Homeschoolers)

President - Tim & Joyce High

teachhomeschooler@gmail.com

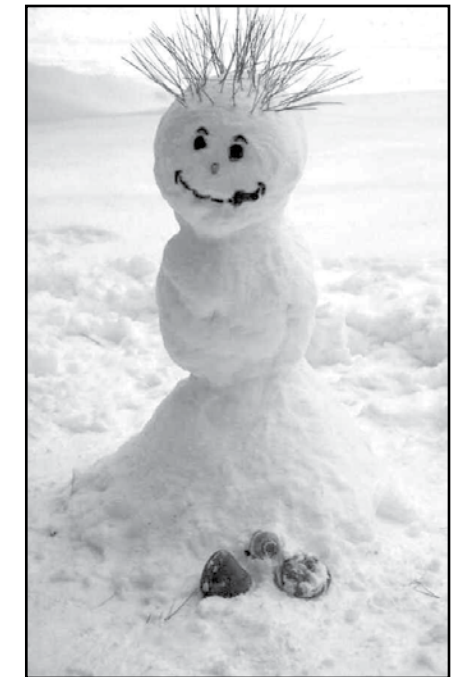
Provides support for homeschooling families in Lancaster and southern Berks Counties. Our support is distinctively Christian and includes co-op classes, cell groups, sports teams, music, drama, field trips, and special events. We accept new members but require each member to commit to volunteering in a way that benefits the group.

The Learning Station Homeschool Co-op

Deborah Spangler, 656-8565

starspanglers@frontiernet.net

The Learning Station meets at the Lancaster Evangelical Free Church in Lititz on Wednesdays. We are a parent-run organization offering classes for all ages from infant - 12th grade. We are dedicated to providing mutual support to each other as we homeschool our children.



CHALC SUPPORT GROUP MEMBERS JOIN HSLDA TODAY...

MONEY SAVING HSLDA DISCOUNT

EMAIL scrawls@chalc.org FOR DETAILS.

Join Home School Legal Defense Association through CHALC and receive a 17% discount on HSLDA membership fees.

HSLDA protects your right to homeschool. Member benefits: Legal Advice on Homeschooling Issues, Online Curriculum Market, Weekly Updates and E-Alerts on homeschooling issues, Discounts in the HSLDA bookstore, HSLDA PerX program offering specials on many different programs and items, The Home School Court Report.

Coalition of Homeschoolers
Across Lancaster County
(C.H.A.L.C.)
P.O. Box 480
Leola, PA 17540

NONPROFIT ORG.
U.S. POSTAGE
PAID
LANCASTER, PA
PERMIT NO. 842

CHANGE SERVICE REQUESTED

Coalition of Homeschoolers Across Lancaster County

**General Newsletter Submissions
And Paid Advertising
Belinda LeFever
scrawls@chalc.org**

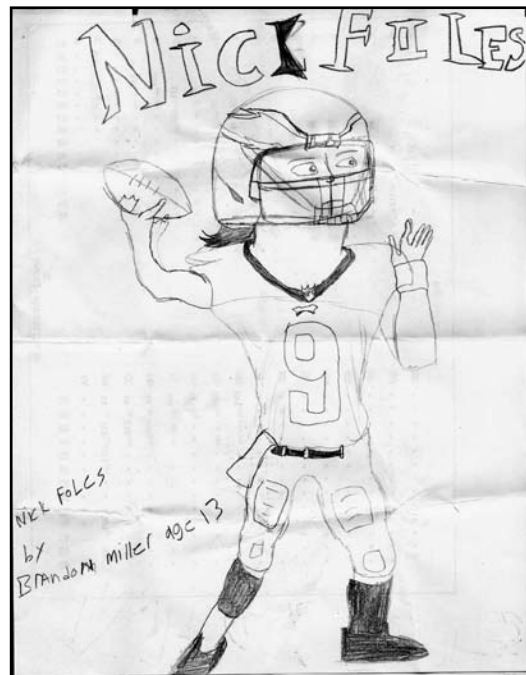
www.chalc.org

CHALC Subscription
without support group membership:
Only \$35.00
for the 2012/2013 school year

See page 2 for detailed
submission/subscription information.

Send In Your Drawings to CHALC, PO Box
480, Leola, PA 17540 or email a .jpg file to
scrawls@chalc.org We will try to publish as
many as we can. Make sure to include your
name, age and a self-addressed/stamped
envelope if you want them returned.

All March newsletter submissions must be into the
editor no later than February 10th. Paid Ads that
need to be designed must be into the ad coordinator
no later than February 6th and ready-made ads by
February 8th.
Editor - scrawls@chalc.org



Artwork by Brandon Miller, age 13